



# THE WORLD HANDICAP SYSTEM ( WHS)

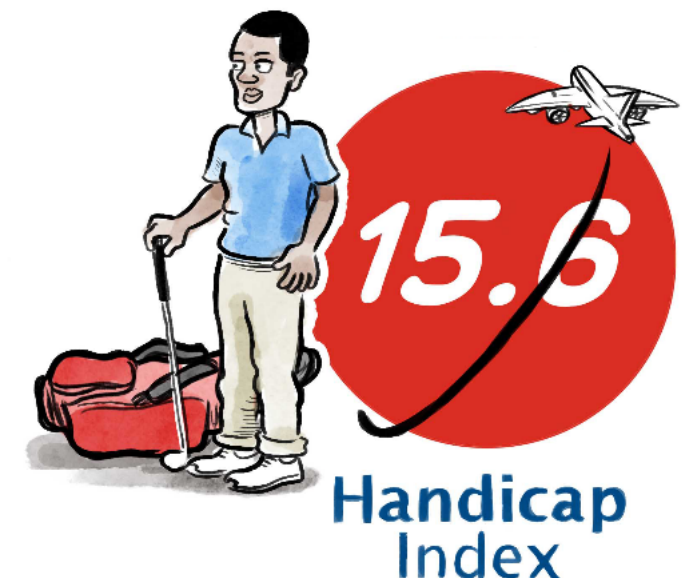


## **The NEW World Handicap System is designed to:**

**Attract more players to the game, make the game more enjoyable and make handicapping easier to understand. The system will also give golfers a Handicap Index which is portable to use from course to course.**

## **WHS has been created to:**

- **Allow golfers to obtain and maintain a Handicap Index**
- **Allow golfers to use their Handicap Index from course to course**
- **Allow golfers to compete, or play recreationally**
- **Unify the previous six different handicapping system**



## How does WHS work:

In order for the World Handicap System to work, golfers will need to obtain a Handicap Index.

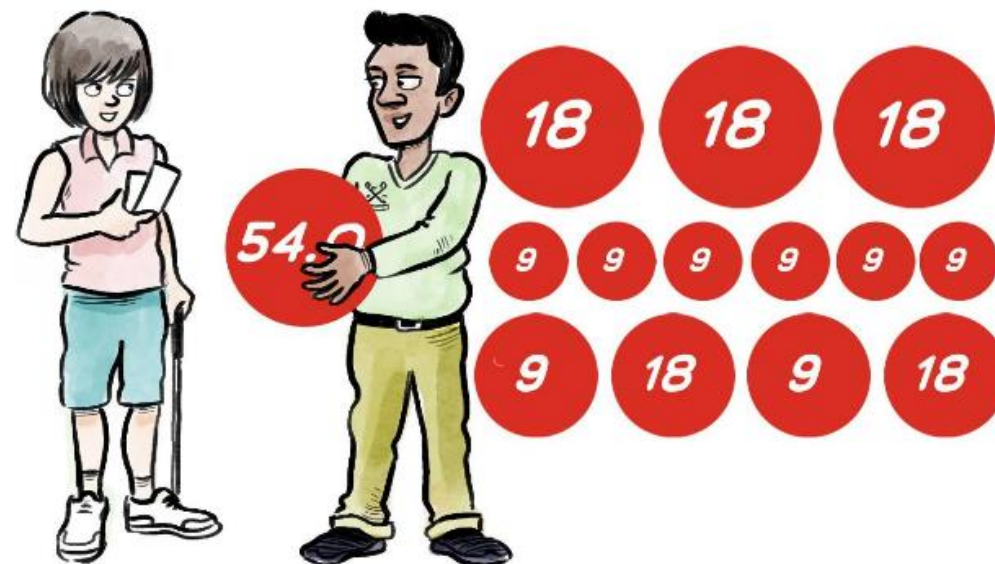
For regular golfers, this will be done by:

- Calculating the best eight scores from the previous 20 rounds

For new golfers, they will have to:

- Submit scorecards of 54 holes (3x 18 holes, 6x 9 holes or any combination of 9 and 18 holes) to their golf club's Handicap Committee

A Handicap Index is portable on any course around the world and will promote inclusivity within the game.



# Obtaining a Handicap Index (New Golfer)

A new golfer will not have 20 scores to be able to generate a Handicap Index.

Instead we use the table to establish the Index until the full 8 from 20 calculation can be used.

Number of <i>score differentials</i> in scoring record	<i>Score differential(s)</i> to be used in calculation of <i>Handicap Index</i>	Adjustment
3	Lowest 1	-2.0
4	Lowest 1	-1.0
5	Lowest 1	0
6	Average of lowest 2	-1.0
7 or 8	Average of lowest 2	0
9 to 11	Average of lowest 3	0
12 to 14	Average of lowest 4	0
15 or 16	Average of lowest 5	0
17 or 18	Average of lowest 6	0
19	Average of lowest 7	0
20	Average of lowest 8	0



# Course Rating

## What is Course Rating?

**Golf Course Rating will be used to measure the playing difficulty of a golf course. It measures how many strokes a Scratch Golfer (a player who can play to a Course Handicap of zero on all rated golf courses) should take on any given course.**

**The rating does this by assessing two main types of challenges which, when combined, result in a common base from which to compare players' abilities:**

- The playing length of the course**
- The obstacles that a player will encounter (e.g. size of green and hazards)**

**A Bogey Rating is the measure of playing difficulty from a set of tees when played by a Bogey Golfer (a player who has a Course Handicap of approximately 20 for a male and 24 for a female).**

**Knowing the Course Rating and Bogey Rating allows the WHS to assess and rationalise the relationship between the two. From this, the difficulty of the course for all other levels of ability can be deduced.**

Please **click** on the following link to see a more detailed explanation of course rating

**<https://www.Englandgolf.org/wp-content/uploads/2020/07/World-Handicap-System-Slope-Rating.mp4>**

# Slope rating

## What is it?

**Slope Rating is the number which indicates the relative playing difficulty of a course for Bogey Golfers, compared to Scratch Golfers. It is the difficulty comparison between a Bogey Golfer and a Scratch Golfer from the same set of tees.**

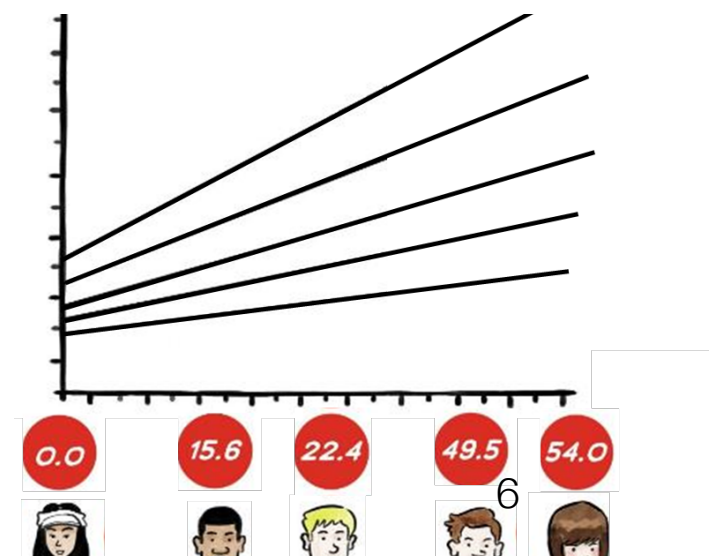
## Why is it important?

- **It's a key component in strokes received calculations and enables acceptable scores from any rated golf course in the world to be submitted**

## N.B

- **Each set of tees on a golf course has a Slope Rating value between 55 and 155**
- **The higher the slope, the more strokes a player is likely to receive**
- **Slope Ratings are gender specific**

**The Slope Rating is a key component in calculating the number of strokes each player receives to play a particular golf course.**



# Course Handicap Calculation.

- For a Handicap Index to be portable across courses, it must be converted into a Course Handicap to determine the number of strokes a player receives for the golf course being played.
- A Course Handicap look up table will be available at each club, or you could use an App or the club handicap software.
- You simply select the tees you want to play and look up your Handicap index to ascertain your Course Handicap
- If you are playing in a competition or match you will also need to know any handicap allowances that may be applied.



# An example of a course handicap table



## Course Handicap Table



England Golf  
Forest Pines Golf Club (1006545) - Forest/Pines  
Men's - White

Course Rating™: 73.5 - Slope Rating®: 149

Handicap Index®	Course Handicap™	Handicap Index®	Course Handicap™
+5.0 to +5.0	+7	23.9 to 24.6	32
+4.9 to +4.2	+6	24.7 to 25.4	33
+4.1 to +3.5	+5	25.5 to 26.1	34
+3.4 to +2.7	+4	26.2 to 26.9	35
+2.6 to +1.9	+3	27.0 to 27.6	36
+1.8 to +1.2	+2	27.7 to 28.4	37
+1.1 to +0.4	+1	28.5 to 29.2	38
+0.3 to 0.3	0		
0.4 to 1.1	1		
1.2 to 1.8	2		
1.9 to 2.6	3		
2.7 to 3.4	4		
3.5 to 4.1	5		
4.2 to 4.9	6		
5.0 to 5.6	7		
5.7 to 6.4	8		
6.5 to 7.2	9		
7.3 to 7.9	10		
8.0 to 8.7	11		
8.8 to 9.4	12	38.3 to 39.0	51
9.5 to 10.2	13	39.1 to 39.8	52
10.3 to 10.9	14	39.9 to 40.5	53
11.0 to 11.7	15	40.6 to 41.3	54
11.8 to 12.5	16	41.4 to 42.0	55
12.6 to 13.2	17	42.1 to 42.8	56
13.3 to 14.0	18	42.9 to 43.6	57
14.1 to 14.7	19	43.7 to 44.3	58
14.8 to 15.5	20	44.4 to 45.1	59
15.6 to 16.3	21	45.2 to 45.8	60
16.4 to 17.0	22	45.9 to 46.6	61
17.1 to 17.8	23	46.7 to 47.3	62
17.9 to 18.5	24	47.4 to 48.1	63
18.6 to 19.3	25	48.2 to 48.9	64
19.4 to 20.0	26	49.0 to 49.6	65
20.1 to 20.8	27	49.7 to 50.4	66
20.9 to 21.6	28	50.5 to 51.1	67
21.7 to 22.3	29	51.2 to 51.9	68
22.4 to 23.1	30	52.0 to 52.7	69
23.2 to 23.8	31	52.8 to 53.4	70
		53.5 to 54.0	71

This indicates that a man with a handicap of 11 will have a course handicap of 14 when playing Forest Pines off the white tees.

### INSTRUCTIONS

\* When using the table, find the range containing your Handicap Index® in the left column. Play with the Course Handicap™ which corresponds with it in the right column.

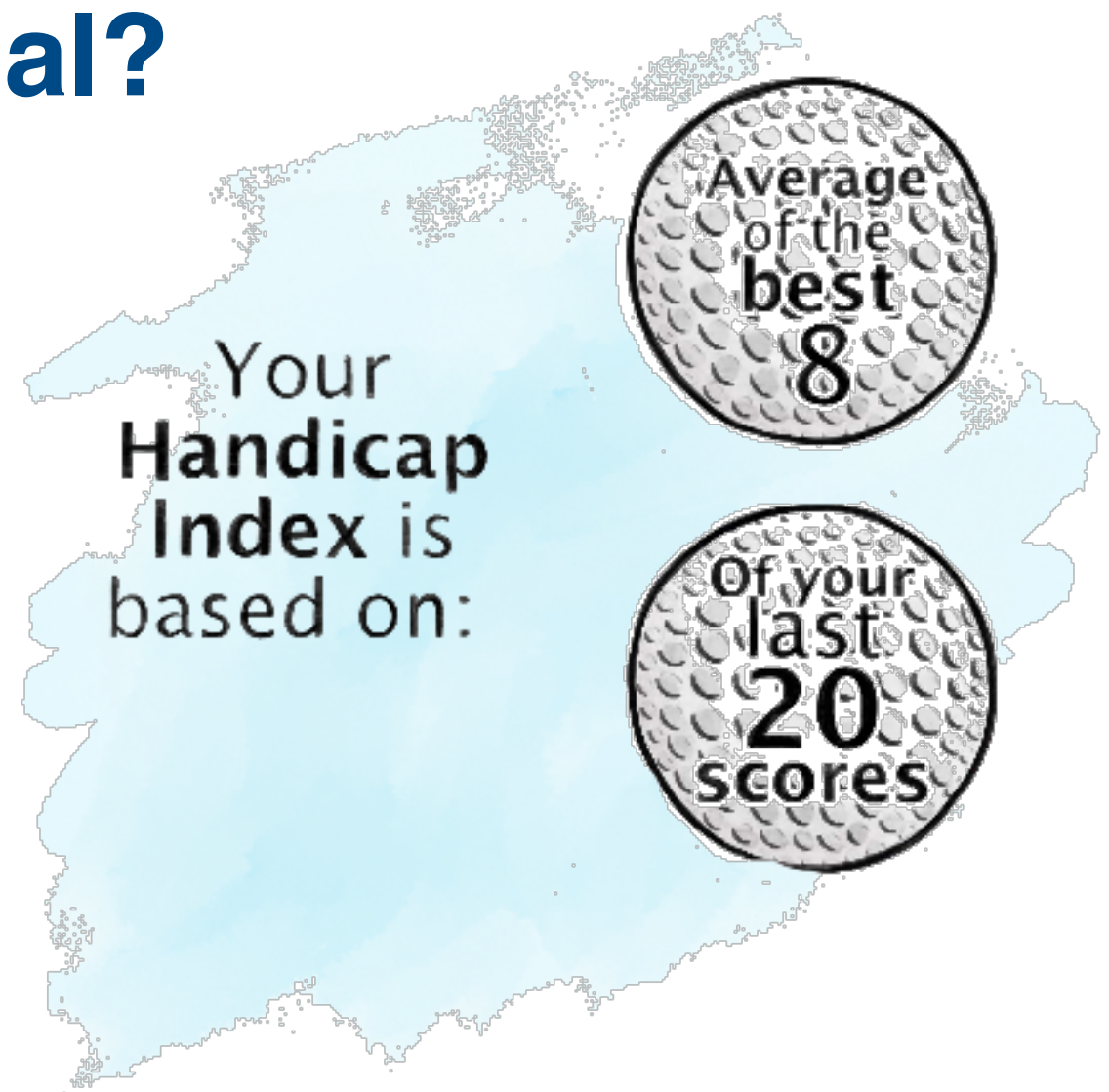
\* Please make sure that the tees from which you are playing correspond with the tees for which this table applies.



# What is a score differential?

A score differential is the difference between a player's adjusted gross score and the course rating, reflecting the slope rating and the playing conditions calculation (PCC).

It is a numerical value attributed to a score achieved on a golf course on a specific day that is posted into the player's scoring record.



An “**adjusted gross score**” is a player's **gross score adjusted** under the World Handicap System procedures for unfinished holes, conceded strokes, holes not played or not played under the Rules of **Golf**, or Maximum Hole **Score/Net Double Bogey**.

# Adjustments to Hole Scores

- By Net Double Bogey for a high hole score.

Or

- If a hole isn't played, a Net Par is recorded  
**(for handicap purposes only)**

**Exception:** if less than 14 holes of an 18 hole round have been played, net par + 1 stroke must be added to the first hole not played and net par to the remaining unplayed holes

These adjustments are made using the **Course Handicap** and will be applied by the computer.



# Authorised Formats of Play

Format of Play	Type of Round	Number of Holes			
Individual Stroke play	Strokeplay - organised competition	9	✓	18	✓
	Strokeplay - general play	9	✓	18	✓
	Stableford – organised competition	9	✓	18	✓
	Stableford – general play	9	✓	18	✓
	Par / bogey – organised competition	9	✓	18	✓
	Par / bogey – general play	9	✓	18	✓
	Maximum Score – organised competition	9	✓	18	✓
	Maximum Score – general play	9	✓	18	✓
Four-Ball Stroke play	Strokeplay - organised competition	9		18	
	Strokeplay - general play	9		18	
	Stableford – organised competition	9		18	
	Stableford – general play	9		18	
	Par / bogey – organised competition	9		18	
	Par / bogey – general play	9		18	
Individual Match play	Organised competition	9		18	
	General play	9		18	
Four-Ball Match play	Organised competition	9	11	18	
	General play	9		18	

# Strokes Received: Playing Handicap

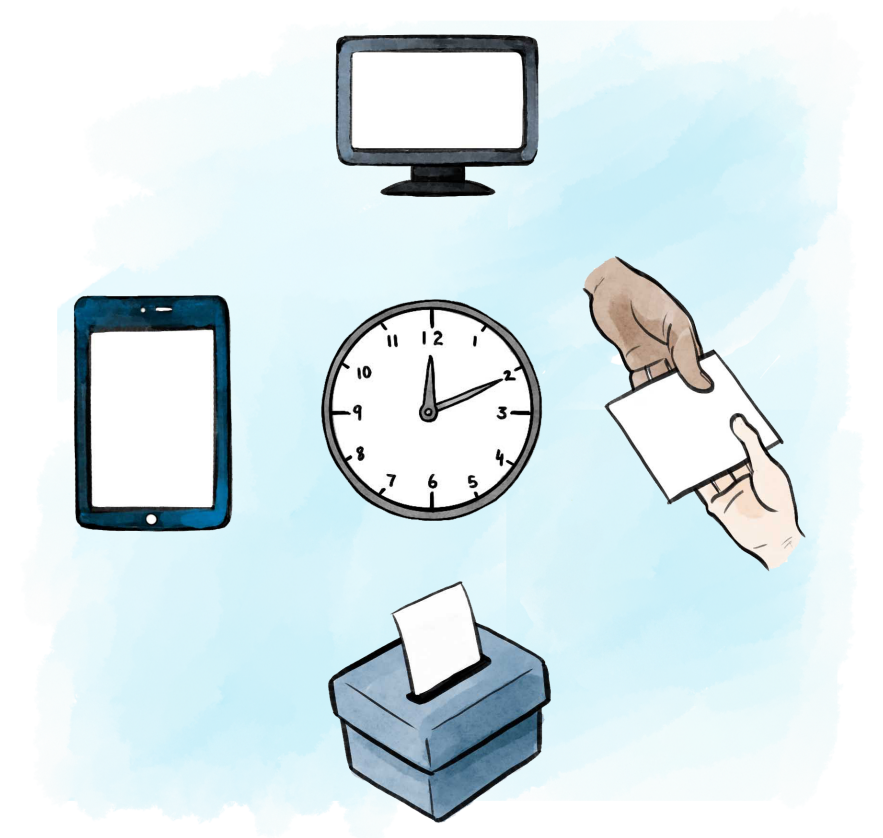
<u>Singles Formats</u>	<u>Handicap Allowance</u>	<u>Team Formats</u>	<u>Handicap Allowance</u>
Individual match play	100%	Four-ball match play	90%
Individual stroke play	95%	Four-ball stroke play / stableford	85%
Individual stableford	95%	Foursomes	50% of combined team handicap
Individual par / bogey	95%	Greensomes	60% Low handicap + 40% high handicap
Individual Maximum Score	95%	Scramble (4 players)	25%/20%/15%/10% from lowest to highest handicap

# Timeframe for Submitting a Score

Scores should be **posted on the day of play** and before midnight.

Posting of scores is possible by three different methods:

- The computer/terminal installed in the golf club, the pro shop, or locker room
  - Logging into the desktop dashboard on an internet connected computer, tablet or cell phone, away from the clubhouse
- 
- Using the Mobile App on a smartphone





# Daily Revisions

Under the Rules of Handicapping, a Handicap Index will update the day after a score(s) is posted (midnight).

- Players should submit their scores as soon as possible after the round is completed, and before midnight.
- This is to ensure the score will be used for the Playing Conditions Calculation.
- A player's Handicap Index can also be revised by a Committee adjustment, **including penalty scores.**



# Transition from CONGU to WHS

The process of transitioning CONGU handicaps to a Handicap Index will take place later this year.

This is an automatic process that will convert your current CONGU record into a WHS scoring record.

It is hoped that by October 2020 all players will be able to view their new Handicap Index on the England Golf website.

The WHS Handicap Index and Slope Rating will not take effect until 2<sup>nd</sup> November 2020.

Players should endeavor to return as many **qualifying scores** as possible during the 2020 season to improve the accuracy of the transition.

**Click on the link below to see an overview of WHS**

**<https://www.englandgolf.org/wp-content/uploads/2020/07/World-Handicap-System-Course-Handicap.mp4>**

**Still unsure !**

**Click on the link below to see some  
frequently asked questions**

**[https://www.englandgolf.org/wp-content/uploads/2020/07/Golfer-WHS-FAQs-  
Resource.pdf](https://www.englandgolf.org/wp-content/uploads/2020/07/Golfer-WHS-FAQs-Resource.pdf)**